

QUICK REFERENCE

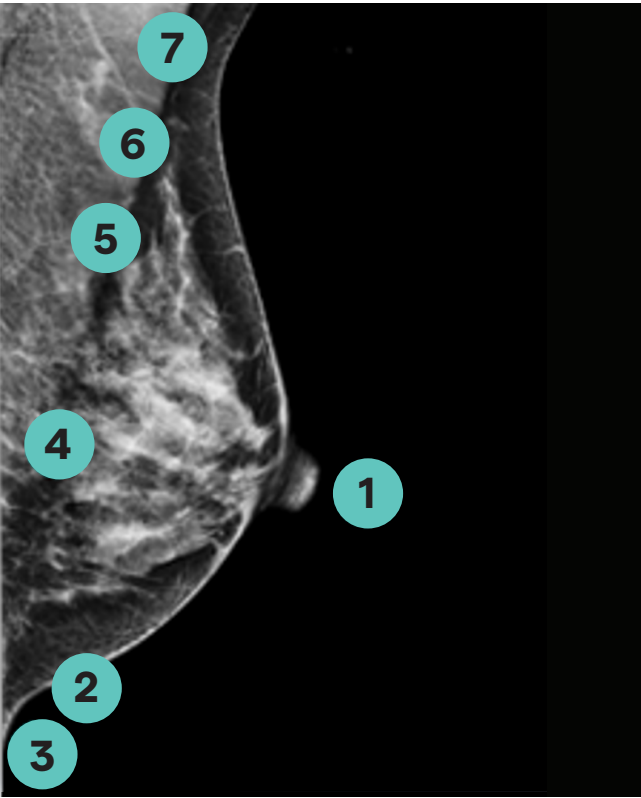
Positioning

Volpara Analytics Technologist Training

Notes

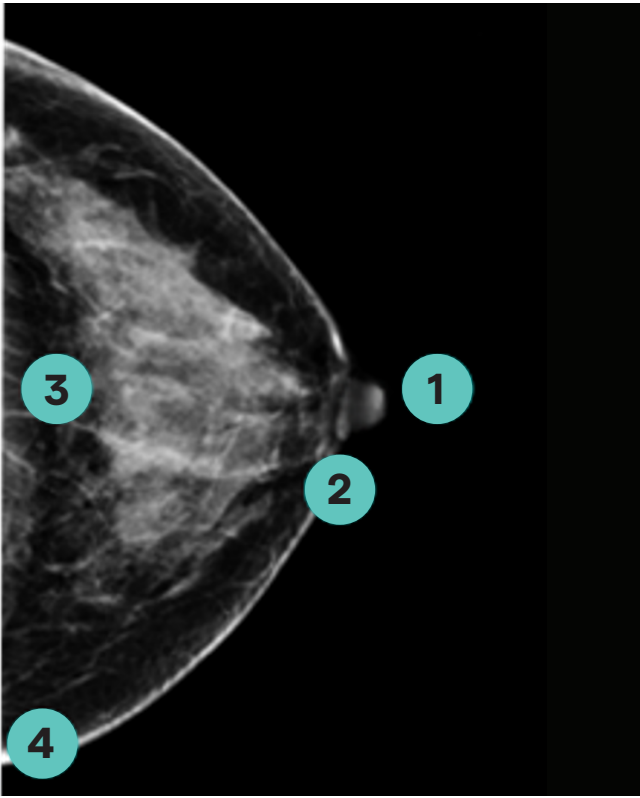
- Every CC and MLO view is evaluated by the Volpara® TruPGMI™ clinical function.
- Volpara TruPGMI categorizes images based on metrics: how well they met, partially met, or didn't meet the metrics.

Volpara TruPGMI Metrics for MLO View



- 1 Nipple in profile
- 2 Inframammary fold (IMF) visible
- 3 Inferior breast tissue has no cutoff
- 4 Pectoral muscle length
- 5 Pectoral muscle shape
- 6 Pectoral muscle adequacy
- 7 No pectoral skin folds

Volpara TruPGMI Metrics for CC View



- 1 Nipple in profile
- 2 Nipple in midline of imaged breast
- 3 Posterior nipple line (PNL) within 1 cm of PNL on MLO view
- 4 Breast tissue has no cutoff

Perfect Highest Diagnostic Quality	Good	Moderate	Inadequate* ** Lowest Diagnostic Quality
This mammogram is an example of excellent work by the technologist.	This mammogram is high quality.	This mammogram is acceptable quality; technologist would be unlikely to repeat image(s).	This mammogram is poor quality; technologist might repeat image(s).
		* Extenuating circumstances, such as body habitus or mobility issues, may limit the technologist's ability to obtain an adequate study.	** Mosaic or tiled images may be categorized as Inadequate.